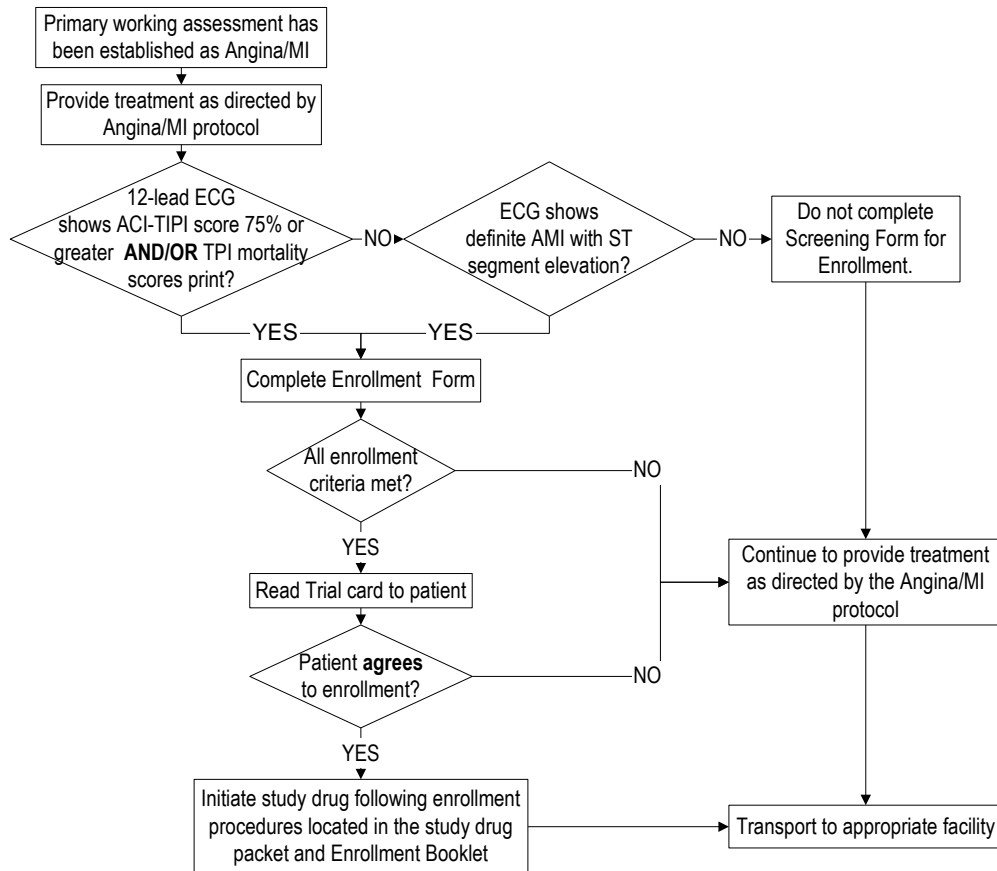


Initiated: 7/31/07
Reviewed/revised: 3/24/08
Revision: 1

**MILWAUKEE COUNTY EMS  
STANDARD OF CARE  
IMMEDIATE TRIAL ENROLLMENT**

Approved by: Ronald Pirrallo, MD, MHSA
Signature:
Page 1 of 1

History	Working Assessment
History of cardiac problems: bypass, cath, stent, CHF Hypertension Diabetes Positive family history Smoker Cocaine use within last 24 hours Available nitroglycerin prescribed for patient	Angina/MI
Signs/Symptoms	Enrollment Exclusion Criteria
Pain, discomfort or tightness in chest, arm, jaw, epigastrium Nausea Diaphoresis Shortness of breath Acute fatigue/generalized weakness Syncope Palpitations Systolic blood pressure less than 100 mm Hg Abnormal rhythm: ectopy, BBB, new onset atrial fibrillation 12-lead ECG confirms likelihood of threatened or established AMI with ACI-TIPI score of 75% or greater	Interfacility transport from physician's office or clinic Age less than 30 years Current dialysis patient Rales halfway or more up patient's back Patient is a prisoner Patient has a language barrier or evidence of impaired reasoning Patient is known to be pregnant



**Notes:**

- Call the IMMEDIATE Trial Research Hotline at (414) 805-9323 when a Screening Form for Enrollment is completed regardless if patient enrolled or not. If the patient was not enrolled, place the Screening Form for Enrollment in the Trial bin at the station along with the 12-lead printout.
- Refer to the IMMEDIATE Trial Enrollment Booklet, pump instructions, and Trial information package with the study drug located on each ALS vehicle.