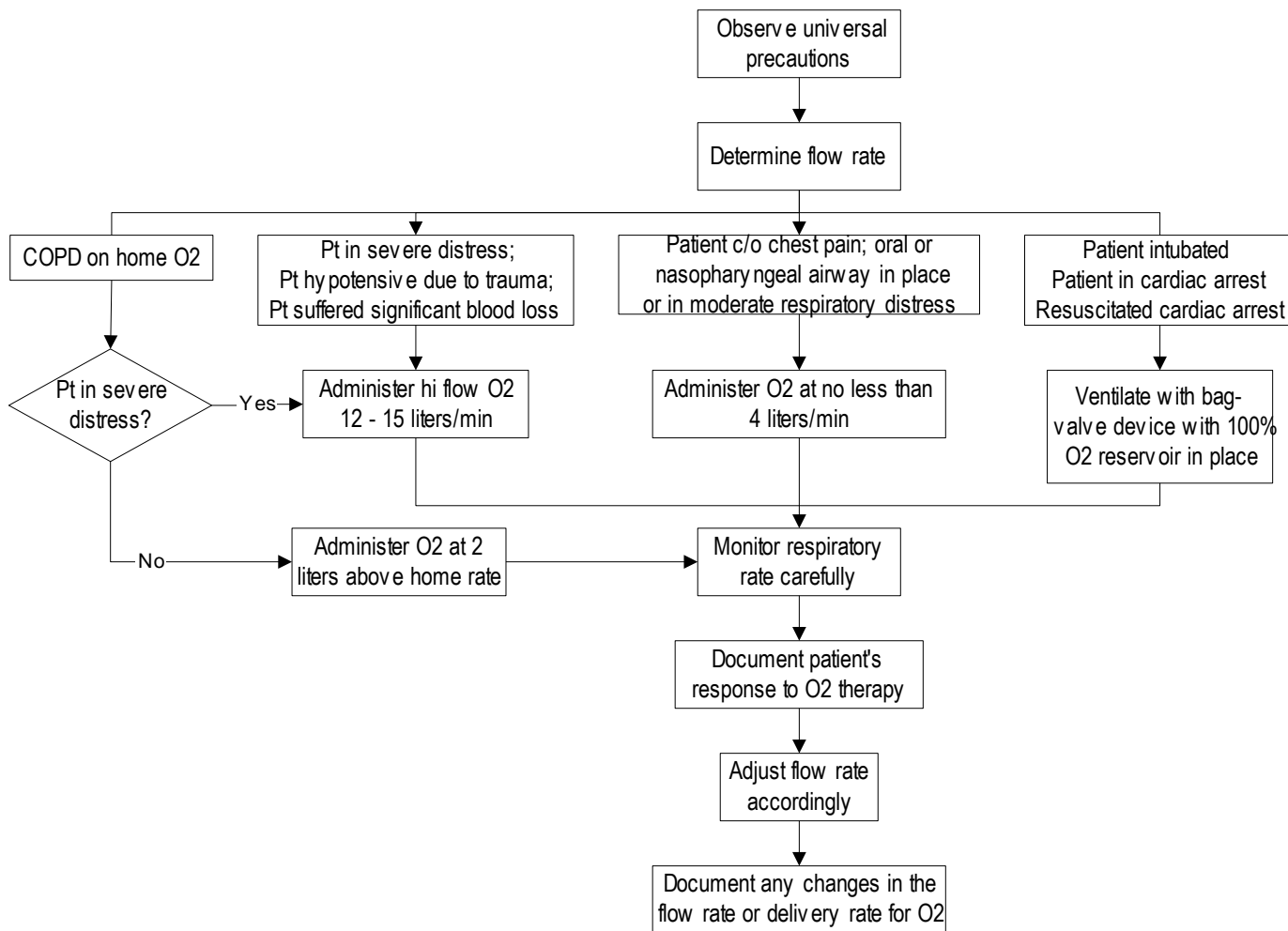


Initiated: 9/92
Reviewed/revise d: 7/1/11
Revision: 2

**MILWAUKEE COUNTY EMS
STANDARD OF CARE
OXYGEN ADMINISTRATION**

Approved by: Ronald Pirrallo, MD, MHSA
Page 1 of 1



NOTES:

- Nasal cannula delivers 1 - 6 liters O2/minute delivering 25 - 40% concentration
- Non-rebreather mask delivers 12 liters O2/minute, delivering 90+% concentration
- Bag-valve device with O2 reservoir provides maximum flow rate for 100% concentration