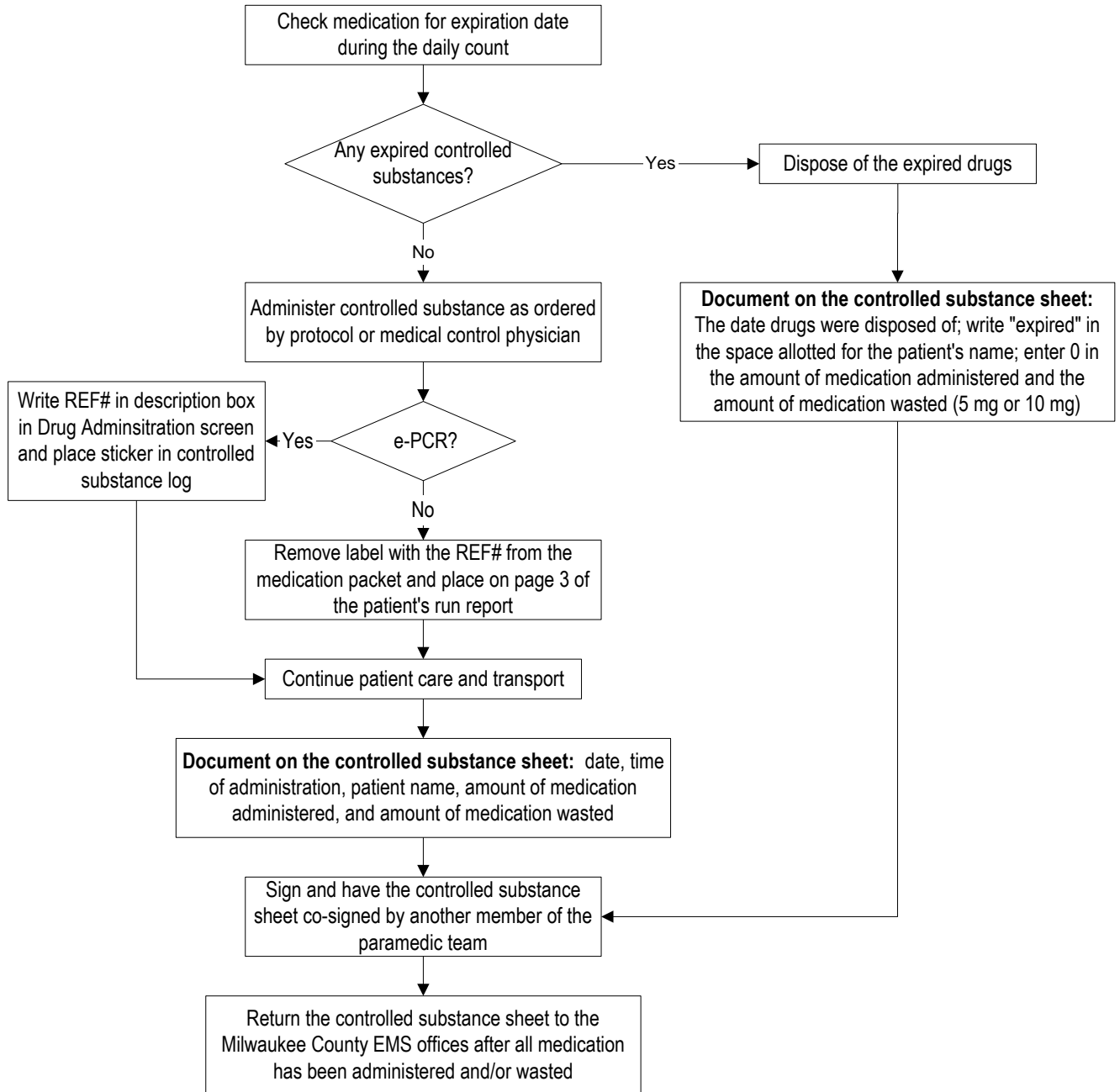


Initiated: 2/27/02  
 Reviewed/revised: 10/15/08  
 Revision: 2

**MILWAUKEE COUNTY EMS  
 OPERATIONAL POLICY  
 CONTROLLED SUBSTANCE  
 DOCUMENTATION**

Approved by: Kenneth Sternig, MS-EHS, BSN, EMT-P  
 Approved by: Ronald Pirralo, MD, MHSA  
 Page 1 of 1

**POLICY:** Administration of controlled substances will be uniformly documented to accurately reflect usage and waste.



**NOTES:**

- Each MED unit will be audited to assure documentation is complete and accurate.
- Records will also be reconciled with the FMLH pharmacy at the end of the year.