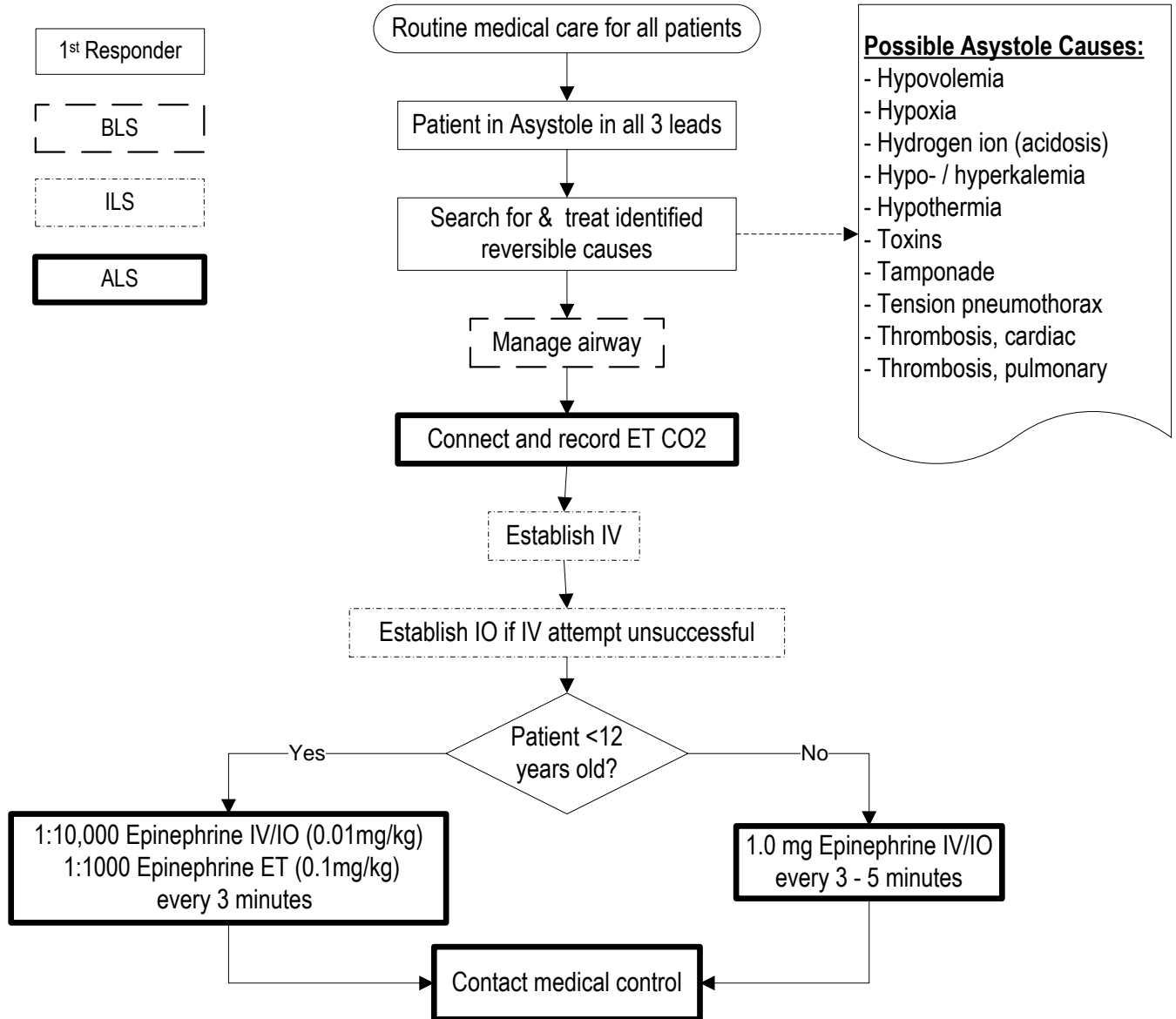


Initiated: 11/73
Reviewed/revised: 7/1/11
Revision: 21

**MILWAUKEE COUNTY EMS
MEDICAL PROTOCOL
ASYSTOLE**

Approved by: Ronald Pirrallo, MD, MHSA
WI EMS Approval Date: 6/22/11
Page 1 of 1



NOTES:

- When unable to establish an IV, epinephrine is to be administered via ETT at 2.0 mg doses.
- For pediatric patients:
 High dose epinephrine is not indicated in pediatric patients with IV/IO access.
 High dose epinephrine is only indicated when administered via ETT.