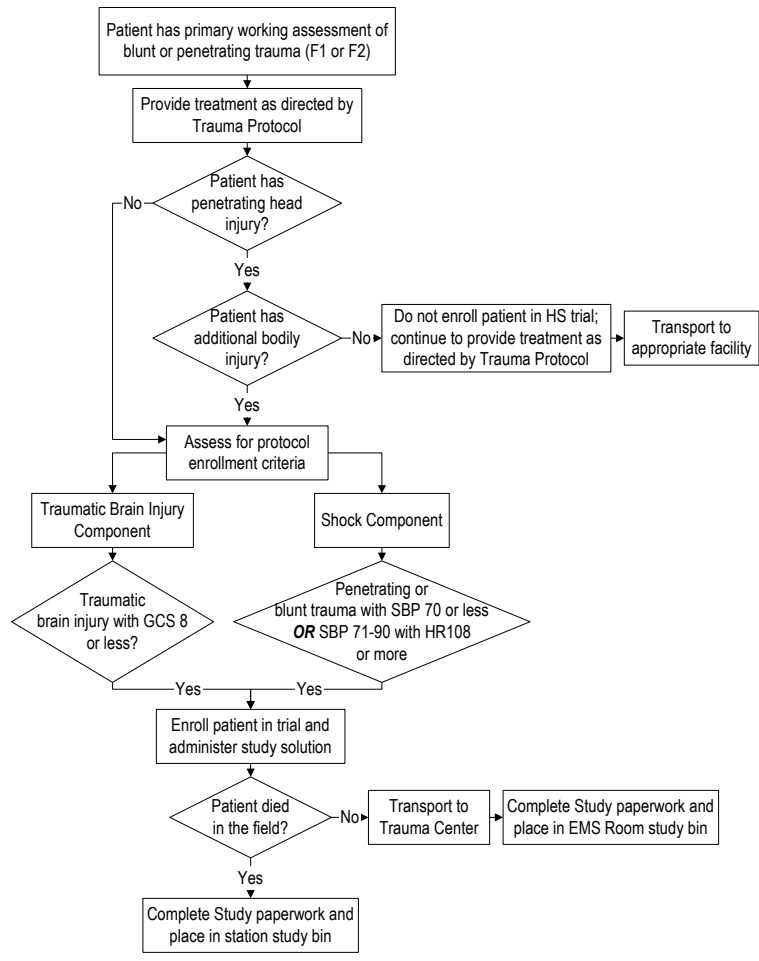


Initiated: 7/31/07
 Reviewed/revised: 2/13/08
 Revision: 1

**MILWAUKEE COUNTY EMS
 STANDARD OF CARE
 HYPERTONIC SALINE TRIAL
 ENROLLMENT**

Approved by: Ronald Pirrallo, MD, MHSA
 Signature:
 Page 1 of 1

History	Signs/Symptoms	Working Assessment	Enrollment Exclusion Criteria
Patient sustained blunt or penetrating trauma	<u>Traumatic Brain Injury Component</u> -GCS is 8 or less <u>Shock Component</u> -Systolic BP is less than or equal to 70 <u>OR</u> -For systolic BP 71-90, HR is 108 or greater	Blunt or penetrating trauma	-Known or suspected pregnancy -Age less than 15 years or less than 50 kg if age unknown -Ongoing prehospital CPR -More than 2L fluids on board -Severe hypothermia (less than 28 C) -Drowning -Asphyxia due to hanging -Burns TBSA greater than 20% -Isolated penetrating injury to head -Inability to obtain prehospital IV access -Time call received to study intervention is greater than 4 hours -Patient is a known prisoner -Patient has on a study opt-out bracelet -Interfacility transport



Notes:

- Call the Hypertonic Saline Research Hotline at 805-9322 for all patients enrolled.
- Refer to the HS Study Packet or call the Research Hotline for questions.